



Existing 380-ft Deep Well, 5 gallons/minute



Restored Year-round Willow Creek at Bridgeway

Creek Restoration and Facilities Improvements

Steve Moore, Friends of Willow
Creek

December 14, 2017

Facilities Improvement Proposal: Nevada St. Campus

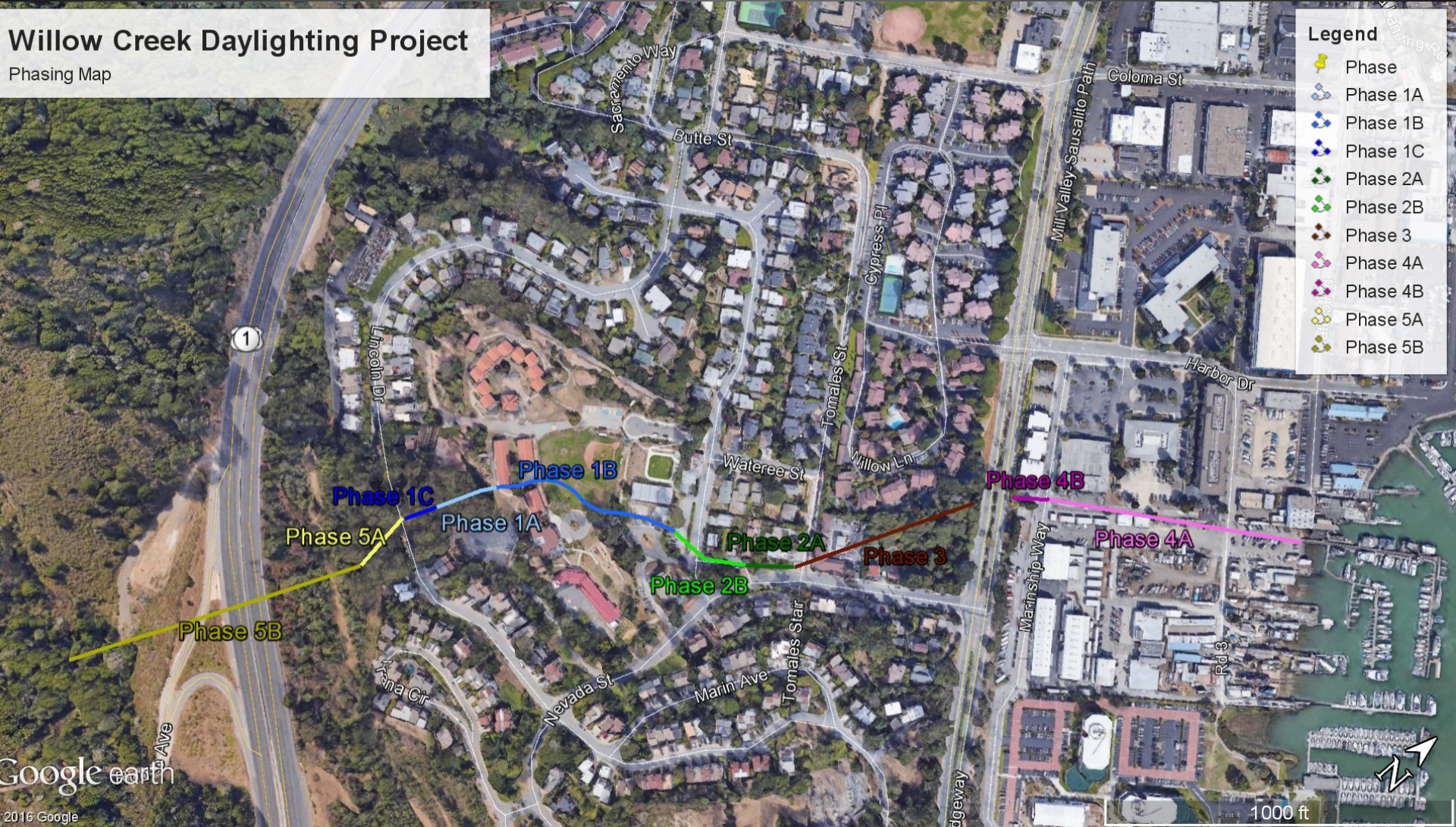
- Creek “Daylighting”, about 300 feet long
 - Remove Fire Hazard/Fall Hazard of Eucalyptus
- Restart Well and Irrigation System
 - Save \$100’s per month, sustainable water supply
- Treat Parking Lot Storm Drainage Runoff
 - Environmental, Educational , Flooding Benefits
- Optional Education Enhancement (Concept 2)
- All to be Funded By State Grants (hopefully)

Funding to Date

- Friends of the Creek – Nonprofit since 2011
 - Vision: Daylight Willow Creek from 101 to the Bay
- Funding Sources
 - Private Foundations
 - Marin County Fish and Wildlife Commission (annual education/environmental budget)
 - Local Businesses/Individuals
 - NOAA Ocean Guardians Program
- Lennox Foundation: \$100,000 for Construction Drawings/Permits for Creek Daylighting on Campus, Clearing of Ivy/Poison Oak (~35% spent)

Vision: Phased Creek Restoration

Willow Creek Daylighting Project
Phasing Map



State Grant Money- What's Needed from the District?

- Permission to Construct Improvements on School District Property
- Letter of Support from the Sausalito-Marin City School District to the State Coastal Conservancy

Outcome: \$1.5 to \$2.5 Million Grant Funds

A photograph showing a grassy area in the foreground with a concrete slab. In the background, there is a building with a red metal roof and a baseball field. The text "Where is the Creek Now?" is overlaid in white.

Where is the Creek Now?

03.15.2011 19:21

A photograph of a dense forest. The ground is covered in a thick, lush carpet of green ivy. In the background, numerous tall, slender trees with light-colored bark stand vertically. Sunlight filters through the canopy, creating dappled light on the ivy. The overall scene is a dense, overgrown woodland.

Where is the Creek Now?

A photograph of a wooded area with many tree stumps and fallen leaves, suggesting a cleared or abandoned site. The ground is covered in brown leaves and debris. Several large, dark tree stumps are visible in the foreground and middle ground. The trees in the background have green and yellowing leaves, indicating autumn. The text "Where is the Creek Now?" is overlaid in white, bold font in the center of the image.

Where is the Creek Now?

What would it look like?





BOULDER WEIR W/ PLUNGE POOL & NATIVE PLANTINGS FIVE YEARS AFTER INSTALLATION



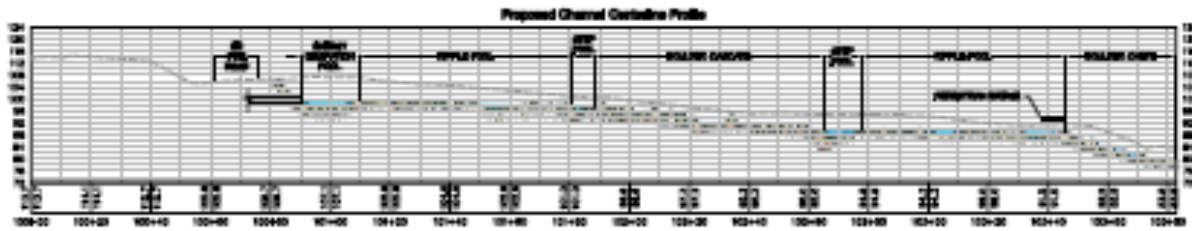
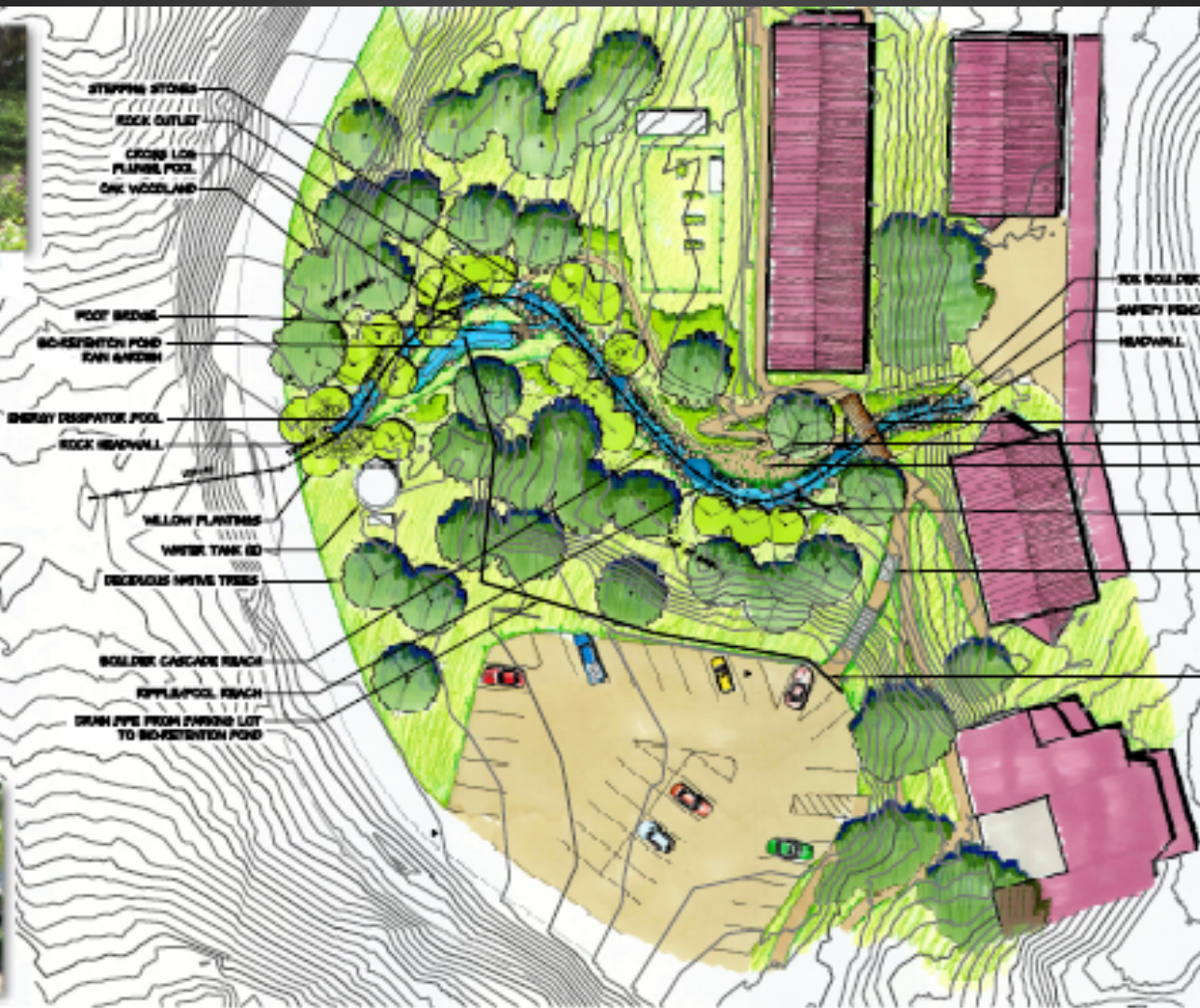
BOULDER CHUTE WITH WILLOW PLANTINGS



SMALL FOOT BRIDGE OVER RESTORED STREAM W/ NATIVE ROCK PLANTINGS



ROUGHENED RIPRAP & BOULDER STEP POOL



CONCEPT 1

- 400 FEET OF NEW DAYLIGHTED STREAM CHANNELS & SPONGE CORRIDOR
- ACCOMMODATE FLOODPLAIN INCREASING CORRECTING SCHOOL BUILDING
- TREATMENT OF PARKING LOT STORMWATER RUNOFF WITH BOILERSTEIN POND

Concept 1: Simple Daylighting



Concept 2: Educationally Enhanced



Urban Creek Restoration Construction



Creek Restoration Example – 2 yrs.



Benefits of Creek Restoration

- Outdoor Classroom
- Outdoor Laboratory
- Aesthetic Benefit
 - Sound & Visual
 - “Green Schoolyards”
- Water Quality
 - Eelgrass/Nutrients
- Ecology
 - Wildlife Corridor
- Community Connection



*Outdoor Classroom at Willow Grove
Near Bridgeway & Willow Creek*

Next Steps

*Willow Creek
Restored
Habitat near
Bridgeway>>*



- Create Partnership for Facilities Improvements
- Letters of Support for Grant Application
- Apply to State Coastal Conservancy for Construction Funding Grant (Prop 1), May 2018
- Division of State Architect (CA Dept. Of General Services) Approvals
- Daylight the Creek!
- Enjoy the New Life-Giving Creek!